



GET Hiking

Great Eastern Trail Newsletter

Volume 14, Number 1, May 2025

By Timothy A. Hupp

Please feel free to print out or copy and distribute this newsletter

Contents, this issue

Upcoming Events	2	GET Hiker Miles	12
Trail Updates	2 – 7	Photo Album	13 – 14
Various News Items	8 – 11	Web Addresses & Emails	14

Hurricane Helene spares most of the Great Eastern Trail

At the end of September 2024 Hurricane Helene came ashore in Florida, and moved into the southern Appalachians, dropping heavy rains in Georgia, South Carolina, North Carolina, Tennessee, and Virginia. It did the most damage in North Carolina and eastern Tennessee. Very heavy rains fell, up to 30 inches in places and mountain communities were devastated.

Much damage remains. The official death toll is about 230, but many residents claim it is much higher. Perhaps one hundred thousand people remain homeless. Tourism is a major part of the economy of the southern Appalachians and this includes scenic roads and hiking trails. Now, more than seven months after the storm, 169 miles of the Blue Ridge Parkway remain closed in North Carolina. Forty-five percent of the Mountains to Sea Trail in the mountains remains closed, largely due to BRP closures.

Just after the storm all of the Blue Ridge Parkway (469 miles) and the Appalachian Trail (857 miles)

south of Waynesboro, VA were closed. Before long, it was determined that most of Virginia was not as damaged, and most of those miles were reopened by mid-October. Also, south from the Great Smoky Mountains National Park were not as damaged, and they were opened by the end of October. That left about 290 miles severely damaged section of the Appalachian Trail. Trail crews and National Forest rangers worked hard to reopen the Trail, and by spring, almost all of it was “punched through” with just a couple of reroutes.

The Great Eastern Trail was fortunately west of most of the damage. Of course, there was wide spread damage and treefalls but far less severe. The most affected area was along the New River, and area partly shared with the Appalachian Trail. Downtown Narrows was flooded, including the grocery store and restaurant. Mary Ingles Trail had a lot of debris on it, which had to be cleared. The Bluestone Dam is currently being renovated, and it is not able to drain as fast as when it is running normally, so the Bluestone Lake floods, covering the camping areas of the Bluestone Wildlife Management Area.

2025 Upcoming Events

MAY 17, 2025 - ROCKY RIDGE NATURAL AREA (Standing Stone Trail)

MEETUP LOCATION: End of Mountain Road, just off of Barree Road.

MEETUP TIME: 10:00 AM

OVERVIEW: Point to Point w/ Shuttle, 2 Miles, Family Friendly

HIGHLIGHTS: Spring Wild Flowers, Large Sandstone Rock Formations

HIKER PREP: Sturdy footwear, water, snacks. Hiking poles may be helpful.

[Click here](#) for Strava Route

JULY 19, 2025 – TRI STATE FESTIVAL (Cumberland Gap, TN)

Downtown Cumberland Gap, TN

Exhibits of Long Trails (GET, Cumberland Trail, Pine Mountain Trail, Warriors Path, and Pioneer Trail) that pass through historic Cumberland Gap.

AUGUST 30, 2025 - NIGHT HIKE AT BUTLERS KNOB (Standing Stone Trail)

MEETUP LOCATION: Butlers Knob Shelter

MEETUP TIME: 7:00 PM

OVERVIEW: Out & Back, 5.69 Miles, Rocky Night Hike

HIGHLIGHTS: Hall of the Mountain King, Throne Room, Butlers Knob Shelter

HIKER PREP: Head Lamp, Sturdy footwear, water, snacks. Hiking poles may be helpful. [Click here](#) for Strava Route

OCTOBER 11, 2025 - SST & MST COMBO HIKE (Standing Stone Trail)

MEETUP LOCATION: Bear Meadows Natural Area Parking Lot

MEETUP TIME: 10:00 AM

OVERVIEW: Point to Point w/ Shuttle, 5.61 Miles

HIGHLIGHTS: Bear Meadows Natural Area, Detweiler Run Natural Area, and Alan Seeger Natural Area.

HIKER PREP: Head Lamp, Sturdy footwear, water, snacks. Hiking poles may be helpful. [Click here](#) for Strava Route

Trail Updates

New York

Crystal Hills Trail

After years of negotiation with Corning Incorporated, the Finger Lakes Trail Club has finally reached an agreement to allow a trail on their property. The company has approved a site access agreement instead of a trail easement, which will permit the use of an existing 2.5-mile trail near their

research facility. Pat Monahan plans to start work on the trail in April and aims to have it open for the summer.

Pat reports that a 2.5-mile section of the Crystal Hills Trail near Corning and Painted Post has been opened after 12 years of negotiations. This connects to a wildlife management area, potentially opening up another 2-3 miles of trail. Pat is facing challenges finding trail maintainers in the area due to the lack of a local hiking group. He hopes to eventually replace 12 miles of road walk with 12

miles of trail in the woods.

Pennsylvania

Mid State Trail

The 26 m long Yellow Creek Bridge WASHED OUT during Hurricane Ida on September 1, 2021 has REOPENED thanks to Bedford County Commissioners! No longer need to follow roads around to west. (9/23)

West Virginia

Allegheny Trail

Section 4S: **Hanging Rock Raptor Observatory is Temporarily Closed**, but Will Open Again with Your Help.

Citing structural defects as the cause, the Eastern Divide Ranger District of GW-Jeff National Forests closed the observatory in November of 2024. The future of this popular nature study facility is uncertain at this moment in time. For years, volunteers from the Friends of Hanging Rock and the WVSTA have kept up with tower safety needs, with almost no assistance from the USFS, until the volunteers noticed the main joists under the observatory's flooring were rotting. Judging that a solution to that problem would need full commitment from the National Forest with engineering, funding arrangements, liability insurance, etc., the volunteers brought the issue to the attention of District Ranger Beth Christensen. On November 1, 2024, an article promoting the observatory as a premier tourist destination, by "the Habitual Hiker" Leonard Adkins (a long-time ALT supporter), appeared in the Blue Ridge Country online magazine: [HangingRockArticle](#) . On Nov. 16, 2024, in an e-mail string regarding the HRRO promotional article, Monroe Co. tourism advocate and Mountain RC&D board member Allison Tomlinson wrote "It took two years to get this [article] in, but it finally ran! Great exposure once again." Then, two days later (Nov. 18) long-time WVSTA and HRRO volunteer Brian Hirt added to the e-string, "Today the Forest Service showed up

at Hanging Rock Observatory and posted signs that the observatory is closed due to structure safety. What happens now nobody knows."

Section 4S: **Hanging Rock Raptor Observatory Fiscal Agent for Donations**

The long-awaited choice for a fiscal agent has been made. The Greenbrier Valley Community Foundation has graciously agreed to serve as the agent for this extremely important project, the reconstruction of the Hanging Rock Raptor Observatory. Please send your donations to the address in the box at right and be sure to put "Hanging Rock Project" in the memo line. An online payment process is being developed now, but until then, checks or cash can be safely handled by the GVCF, a long-serving 501(c)(3) non-profit charity. The USFS has no money and very few employees, but those few are committed to helping build back the observatory with the best, long-lasting materials available, if we all pitch in with donations. An structural engineer has begun evaluating the needs, and a steering committee made up of representatives from the Friends of Monroe, the Friends of Hanging Rock Raptor Observatory, the WVSTA, the Mountain Resource Conservation and Development Council, and the Monroe County WV Commission is working with the USFS staff to move forward with engineering design, planning the demolition, pricing the materials and the construction labor, getting contractor bids, awarding the bid, and overseeing the construction. The USFS has the last say on every step of the way. It is too early to know exactly how much the project will cost, but it may be in the \$500K ballpark. It is not too early to start donating and letting others know that there is now a local fiscal agent that can receive donations.

Section 4S: May 17-18 **Turner Family Shelter Construction**

(alternate dates due to weather delays are July 25-28, Aug. 8-11, Oct. 3-6, or Oct. 24-27)

Shelters are absolutely essential for the safety of backpackers who get caught in severe weather events, and for those who want to sleep comfortably when the weather is just sour. For an instance of the latter, here is what ALT thru-hiker Nancy East

wrote on her ALT facebook entry April 2 at 9:43 a.m., “After we left Huntersville, we had a gnarly climb back up to the mountain spine of the ALT. We originally planned to stay at a campsite a mile ahead of the Marlin Mtn. Shelter, but we couldn’t resist it once it started raining. It was a good choice as the rain continued well into the night.”

Help us make a long-time shelter dream come true. Peters Mtn is a significant escarpment that catches the brunt of storms in every season. I was once caught up there in an ice storm. The WVSTA has wished for years to be able to locate a shelter at approx. the halfway point between the AT’s Sugar Camp Farm Trailhead and the ALT’s Hanging Rock Trailhead. Thanks to the Turner family the dream is about to come. We will need volunteers to move materials up Peters Mtn along the difficult Salt Sulphur Springs Turnpike (4WD pickups and UTVs with trailers). Also weed-eating around the shelter site, full construction, painting, creating a fire pit, and improving a spring. Contact S4 Coordinator Justin Mullins for work assignments, meeting times, and locations.

This will be the 12th shelter along the ALT and the 4th on private land. As with the other shelters on private and public property, the Turner Family Shelter serves all trail users. Several volunteer donors dedicated to enhancing the safety of backpackers atop windswept Peters Mtn are helping fund this shelter out of our own pockets. Justin found a local supplier who offered us a good deal if we could purchase before the Trump Tariffs went into effect.

WVSTA’s gold business member TRAILS Interpretive Services fronted the money for materials (\$5,264.27) and we barely squeaked under the price increases. The staff of KittlesHardware expressed their pride in being a part of this ALT

shelter project that will benefit Monroe County and they also provided Justin with competitively-priced trail maintaining equipment. Locally-owned mountain property, locally-sourced materials, locally-owned businesses, and local outdoor recreation benefits, make this project an exemplary one for the economy of southeastern WV. If you wish to donate to this worthy cause, call or e-mail me and I’ll tell you how you can contribute. Doug Wood 304-550-1006, chingwe1755@gmail.com . Every donation helps.

Mary Ingles Trail

The Mary Ingles Trail/GET, which had suffered from mudslides and flooding as a result of Hurricane Helene. The trail was in poor condition but had been cleaned up and was now in better shape. Plans have been made to build the Great Eastern Trail from Hinton up to Bertha, which would open up the trail instead of road walking.

Kentucky

Pine Mountain Trail

The Pine Mountain Trail had been impacted by Hurricane Helene and that they were working on clearing blowdowns. They were still working on relocating the trail at Bryant Gap and that Shad Baker (who is president of the Pine Mountain Trail Conference) had purchased the property at Cable Gap. PMTC had recruited new volunteers and that the Highlands section had been submitted for the Far Out app.

Tennessee

Cumberland Trail

Trail Closure

The Cumberland Trail between Devils Racetrack and Eagle Bluff (2.26 miles) near Caryville, TN remains closed.

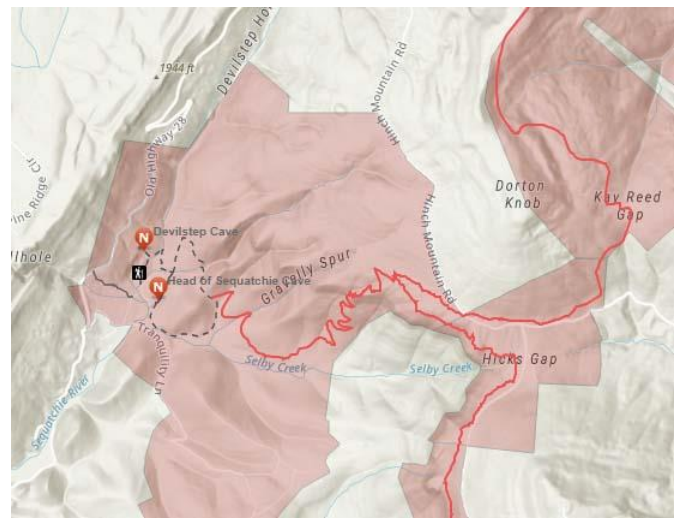
New sections of Cumberland Trail opened

Since last year, there have been three new sections opened on the Cumberland Trail, and another section is being worked on by the Cumberland Trails Conference (CTC).

The northernmost of the three sections is evident on the online interactive map, between Brady Mountain and Hinch Mountain. Last year a section connecting Stinging Fork to Head of Sequatchie State Park was opened, going not far from the south end of the Brady Mountain Section. A road walk was available for through hikers, who may not need to go down to Head of Sequatchie. This left a gap of trail that was along the Jewett/Happy Top Road and Radar Tower Road for through hikers. (Note – the Jewett/Happy Top Road is not passable to ordinary cars, due to ruts and boulders making hanging up a real possibility.) According to the online interactive map, a new portion of the Cumberland Trail has been opened between Brady Mountain and Hinch Mountain in Rhea County, Tennessee.



2023 map with newly opened section



2024 map with trail sections linked

Now the gap has been filled with new trail bypassing Jewett/Happy Top Road, crossing it near the switchbacks descending to Head of Sequatchie.

Upper Piney River section completed

Before



After



Upper Piney

Hard work from the trail crew to build this set of steps above the flood zone.

Rock work along Piney River section of Cumberland Trail.

The CTC has been working for some time on extending the CT up Piney River from the existing trail to Piney Creek Road, going toward the Laurel Snow State Natural Area (there are still about 8 miles distance between that road and the LSSNA). Now there is continuous trail for the Cumberland Trail for about 50 miles, from Piney Creek Road north to Ozone Falls.

Morgan Creek Section Completed

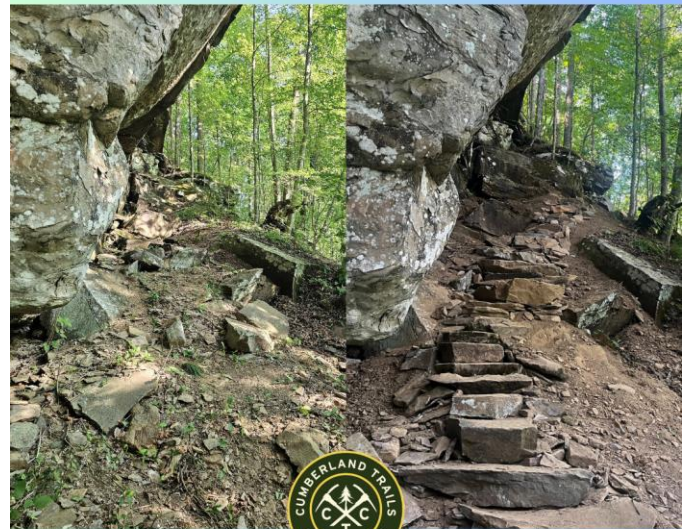
The southern new section is between TN 30 and the Laurel-Snow State Natural Area, west of Dayton, TN. The CTC completed work on this section on the Morgan Creek section, connecting the Graysville Mountain section to the Laurel-Snow

State Natural Area. This new section offers hikers a scenic and strenuous route into the Morgan Creek gorge, showcasing stunning natural beauty and diverse terrain.

As with all new trail completions, the Cumberland Trail State Park will review and approve the Morgan Creek section before officially opening it to the public. While we understand the anticipation, please wait for the official opening announcement to ensure a safe and enjoyable experience. We look forward to welcoming you to this remarkable new addition to the Cumberland Trail soon!

BEFORE

AFTER



With this new section, there is about 20 miles of continuous trail between McGill Creek and Laurel-Snow SNA.

Construction on Daddy's Creek Section

The CTC is currently replacing a road walk with trail in the Keyes-Harrison Wildlife Management Area in the Daddy's Creek Section.

March was a highly productive month for the Cumberland Trails Conference, thanks to the tireless efforts of our trail crew, dedicated volunteers, and the enthusiastic participants from Illinois State University's Alternative Spring Break program. Throughout the month, over 500 feet of new trail was constructed, including the installation of 58 stone steps, pavers, and several sections reinforced with crushed rock to create a durable trail tread. The crew tackled challenging terrain, working through steep bluff walls and rocky boulder fields, carefully building stable steps and pavers to navigate the rugged landscape.

In preparation for the Alternative Spring Break event, the crew spent an entire week clearing corridor, removing thick mountain laurel, and marking sections for volunteer work. Their prep work paid off. During the event, the volunteers removed over 2,600 feet of duff and cleared more than 50 stumps, significantly accelerating the finishing process. In total, 28 students from Illinois State University and 9 local volunteers contributed their time and energy to the project. Their efforts will help us catch up on trail footage delayed by

recent weather challenges.

April was a demanding but rewarding month for our trail crew as they tackled some of the Cumberland Trail's steepest, rockiest, and root-choked terrain. Over the course of several tough weeks, the team completed more than 1,895 feet of new trail. The crew installed a total of **64 stone steps and numerous pavers**, carefully working through steep hillsides, dense root systems, rocky soil, and several boulder fields. Notable highlights included a tricky **40-foot boulder field crossing**, a small creek crossing reinforced with stone steps and pavers, and stretches of crushed rock tread to stabilize the path. In addition to building trail, the team also cleared **0.4 miles of dense trail corridor** through thick rhododendron and mountain laurel. Despite the slow, labor-intensive work, progress continues on this incredible section of the Cumberland Trail — and we can't wait to share the finished product with hikers soon.

A huge **thank you to our volunteers** who pitched in this month as well! On **Friday, April 11th**, three dedicated volunteers removed **75 feet of duff**, several stumps, and a large number of rocks at a section where the ASB volunteers left off. Their hard work and willingness to take on tough, hands-on trail tasks make an enormous difference in keeping the trail moving forward. We're grateful for every hand that helps shape this trail.

VARIOUS NEWS ITEMS

Tiltrock Loop

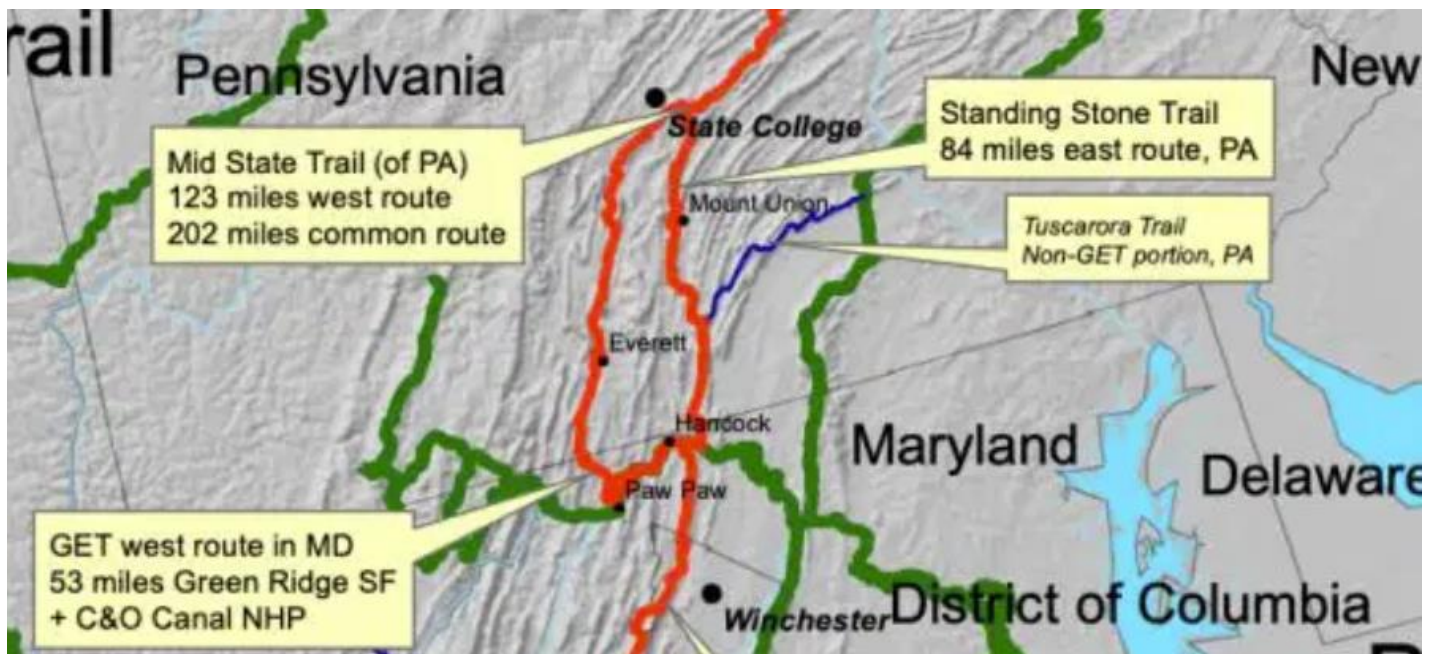
Also known as the Great Eastern Trail Bifurcation, this loop made from the divided part of the Great Eastern Trail route has come to the attention of the Bedford County (Pennsylvania) Development Association. As a loop, backpackers can start at any point along the loop and return to the same point.

Jen Marsh with Bedford County Development Association – the economic development organization for Bedford County, PA has over the past year created a group/alliance made up of outdoor recreation enthusiasts and business owners aimed at enhancing and expanding our county's trail system. Michael Teeter, an avid backpacker who has a passion for the outdoors, is one of the

folks that participates in the outdoor recreation alliance. He has brought to the attention of the group the potential for a 300-mile loop trail using existing trails (Great Eastern, Tuscarora, Standing Stone and Mid State Trails).

This loop connects State College in the north and Hancock, Md in the south, centering around Everett, PA (Bedford County). If promoted, this loop backpacking trail would entice people to the backpacking experience, encourage overnight stays, and help promote outdoor recreation for both PA and MD.

Michael and Jen have been on a call to discuss the idea with Keystone Trail Association and they are very excited about the possibility this loop will create. They were also kind enough to provide us with your contact information.



Jennifer Marsh, Vice President

BCDA | ONE Corporate Drive, Suite 101, Bedford, PA 15522

(814.623.4816) | (301.331.1348 | Fax 814.623.6455 | * [marsh@bcda.org](mailto:_marsh@bcda.org) , www.bcda.org

This institution is an equal opportunity provider, employer and lender.

Issues near Wardensville, WV

The Wardensville to Virginia (VA) State Line Project is a component of the Appalachian Development Highway System's I-79 in WV to I-81 in VA Corridor H Project. It will contribute to addressing large-scale needs identified by the U.S. Congress and the Appalachian Regional Commission in mid-1960's. It will be a 4-lane highway but will maintain connectivity with local roads, farms, etc.

Approximately 6.8-miles long, the Wardensville to VA Project is the easternmost portion of the Corridor within WV. Currently, all east-west traffic must use existing US 48 / WV 55, which is a two-lane road with narrow shoulders, steep grades, and sharp curves. Construction of the project will provide a safer, more efficient roadway option to through traffic, including heavy trucks and emergency vehicles. It has not been completed between Elkins and Davis, which remains 2 lanes. Also, across the Virginia border, US 48/VA 55 is two lanes, connecting to I-81 at Strasburg in 14 miles.

The planned construction affects the Great Eastern Trail because the Tuscarora/GET crosses this highway at the state line. Although the road would be two lanes at the trail crossing, there is concern that approaching traffic may be going faster than currently (and it is a challenging crossing now), making it harder for drivers and hikers to see each other.

CPV Springs Wind

Another issue just north of there is a planned Wind Turbine Farm in the Capon Springs area. The plan is not to build the turbines on top of Great North Mountain, where the Tuscarora/GET is, but down on the west slope of the mountain. However, while most wind turbines are about 300 feet tall, the ones planned here are almost 700 feet tall, and would rise over the top of the ridge, possibly being visible from the east side, as well as dominating the view on the west side.

System Information: **18-25 high-efficiency turbines**, Total Installed Capacity: **150 MW**
Est. Start of Construction: **1st half 2027**

Located in Hampshire County, West Virginia, CPV Springs Wind will be a 150 MW wind project by Competitive Power Ventures (CPV) built on private land with a new switchyard constructed on site to avoid the need for additional transmission lines. By using highly efficient state of the art turbines, the project will generate more power using fewer turbines. CPV Springs Wind is expected to reach commercial operation in 2028.

This project has faced local opposition, partly because it had been planned and approved for years before the local residence even heard of it, in 2024.

New Interim Executive Director at CTC

The Cumberland Trails Conference is delighted to announce the appointment of Stephanie Cook as Interim Executive Director. Stephanie steps into the role to lead the CTC during an important transitional period.

Stephanie is a fervent lover of the great outdoors, brings a wealth of leadership experience, business acumen and strategic vision to the organization. With a strong background in operational improvement and business leadership, she is dedicated to advancing the mission of the CTC. She will focus her efforts on administrative operational improvements and building a strategic vision for the organization going forward.

We are thrilled to have Stephanie as our new Interim ED. Her leadership and experience will be invaluable as we navigate this important phase for our organization. Coupled with her lifelong connection to nature and genuine passion for aiding the mission of the CTC, these traits made her an ideal candidate. Her skills and commitment are inspiring and bring a focused energy to all areas of our operations. Please join us in welcoming Stephanie!

On behalf of the Board of Directors,

-David Scott
Chair, The Cumberland Trails Conference

Talladega National Forest Expansion Act

Thursday, April 9, 2025

Legislation would strengthen conservation efforts and boost tourism in the area.

WASHINGTON – Today, U.S. Senator Tommy Tuberville (R-AL) joined U.S. Representative Mike Rogers (R-AL-03) in introducing the *Talladega National Forest Expansion Act*. The *Talladega National Forest Expansion Act* would expand the proclamation boundary of the Talladega National Forest by approximately 50,000 acres in three counties in East Alabama. This bill gives the U.S. Forest Service (USFS) the authority to purchase land from willing sellers—stimulating the local economies and promoting conservation in the surrounding areas.

“The Talladega National Forest is one of many reasons to visit Alabama,” said Sen. Tuberville. “From beaches to mountains to forests to lakes, we truly have it all in our state. But we have to make sure we take the right steps to conserve our resources. By expanding the proclamation boundary, we will boost tourism in surrounding towns and keep the forest beautiful for years to come. I’m thankful to be working with Rep. Rogers to expand the Forest’s boundaries and ensure continued economic and agricultural prosperity in our great state.”

“I was glad to join Coach Tuberville in this effort to allow the expansion of the boundary of the Talladega National Forest by 50,000 acres,” said Rep. Rogers. “The proposed expansion to complete the southern portion of the Pinhoti Trail will provide a large boost to our local outdoor tourism industry. I was glad to work closely with our local leaders on this legislation and am hopeful to see an undivided Pinhoti Trail in the near future.”

“The Alabama Trails Foundation applauds the leadership of Senator Tuberville and Congressman Rogers in introducing this important

legislation,” said Paul DeMarco, President, Alabama Trails Foundation. “The expansion of the Talladega National Forest represents a legacy of commitment to outdoor recreation and conservation. It lays the foundation for making the Pinhoti Trail an even more popular destination and positions East Alabama to continue growing an outdoor recreation economy into a powerhouse that spotlights the importance of Alabama’s natural resources.”

This legislation represents an important step forward for Alabama’s trails. The southern section of Alabama’s premiere hiking trail, the Pinhoti Trail System, would be completed upon the USFS purchasing these lands from willing sellers. The Alabama Trails Foundation has collaborated with county commissions, state legislators, and local hiking groups to bring this opportunity to Alabama’s natural landscape. Since our creation by the Alabama Legislature alongside the Alabama Trails Commission, we have been improving Alabama’s trails environment every day.

Starting with a strategic plan for the Pinhoti Trail that has helped to guide the process, we have pushed for steady momentum that deepens the connection between trail user and the larger community of East Alabama. With our partners at the Alabama Forestry Commission and others, our efforts at the southern gateway at Flag Mountain have improved access for everyone, protected our treasured history, and firmly planted the starting point of the trail atop the first 1,000-foot mountain in the Appalachian Mountain chain. From here, a hiker can make their way all the way to Maine without ever stepping foot in a car.

Talladega County Commission, Coosa County Commission, Clay County Commission, and Alabama Trails Foundation have endorsed this legislation.

Read full text of the legislation [here](#).

BACKGROUND:

The Talladega National Forest was established in 1936 with two distinct proclamation boundaries: the Oakmulgee Division and the Talladega Division. Currently, the Talladega Division has a

proclamation covering 400,000 acres with roughly 200,000 acres under ownership by the U.S. government. Since its establishment, the proclaimed boundary of the Talladega National Forest has been adjusted nine times, most recently in the 1990 Farm Bill.

The Pinhoti Trail, part of the Talladega National Forest, is Alabama's longest-distance hiking trail. Currently, the trail is interrupted by 15 miles of road walks between its southernmost portions. This legislation would allow those lands to be acquired by the USFS, improve trail maintenance efforts, and improve hiker safety by transforming the 15-miles of road walks into off-road trails.

GET work by GETA President Tim Hupp

5/8/2024 Garlic Mustard removal on S part of GET section 5c
5/14-17/2024 Hike/business trip to Narrows, VA & Bluestone WMA, WV
5/30/2024 GET sign replacement on GET section 5b
6/5/2024 weed whack N part of GET section 5a
6/18-22/2024 Hike trip on Mid State Trail, PA
7/3/2024 weed whack N part of GET section 5c
8/14-15/2024 weed whack mid part of GET section 5a
9/4/2024 weed whack mid part of GET section 5a
10/10/2024 GET workshop presentation at ALDHA Conference in Abingdon, VA
10/30/2024 Hike to Big Schloss & GET sign replacement
3/4/2025 Reblaze GET section 6d, GET sign replacement
4/1-11/2025 Hike/business trip to Chattanooga, TN
4/23/2025 Reblaze Bergton, VA road walk
In addition, wrote letters to Tennessee state officials and to churches in Kentucky.
Prepared this newsletter.

David Frye (1939-2025)

David Frye, who hiked with me (Tim Hupp) on the GET from 2009 to 2017, died on March 3, 2025 in Harrisonburg, VA. He also hiked 1019 miles of the AT. He leaves behind 2 sons and 2 grandchildren.



How Many GET miles have you hiked?

An awful lot of people still have **not** reported their GET miles—unless no one has hiked much of the Mid State, Standing Stone, Tuscarora, Pinhoti, and other constituent trails that make up the GET.

Here's the breakdown of the constituent trails, GET miles only:

Crystal Hills Trail	48 miles
Mid State Trail	322 miles
Standing Stone Trail	84 miles
Tuscarora Trail	132 miles (now 125)
Allegheny Trail	41 miles (plus gap)
Appalachian Trail	23 miles
Pine Mountain Trail	58 miles (trail only)
Cumberland Trail	175 miles (so far)
Pinhoti Trail	214 miles

If you have thru-hiked any of these trails, you have this many miles of the GET.

There are also segments of combined shorter trails:

Headwaters Section	165 miles
TuGuNu Section	100 miles
Lookout Mtn. Section	87 miles

...plus a few others

I'm trying to give credit for those who have hiked significant miles of the GET. If you have hiked at least 50 miles of the GET, please report it to me at the email address given at the end of the newsletter.

You may include miles of exploring for GET routes, and if it has two branches, you may count the miles hiked on both. Count only the trail miles—if you've done a section twice, you don't double the miles. Also, do not count side trails, but if you hike a close parallel trail, you may count that if you go that way instead of the main trail.

So get out and GET Hiking!

And report your miles!

Hikers and Total GET miles hiked

Jo Swanson "Someday"	1774
Bart Houck "Hillbilly Bart"	1774
Kathy Finch	1774
Steve Prescott	1735
Dan Bedore	1093
Mark Sleeper	1033
Tim Hupp	1029
Stuart Hickey	915
Taylor Pannill	800
Doug Schubert	787
Ethan Oppenheim	774
David Oppenheim	774
Marcie Schubert	739
Sue Turner	720
John Calhoun	632
Lois Ludwig	561
Bill Shaffer	545
Michael Zidanic "Harpo"	535
Dixie Greer "Star Left"	528
Bill Amonette	448
Rick Guhse	437
John Stein	437
Laverne Beachy	398
Heather Houskeeper	397
Jim Sims	392
David Frye	386
Tom Johnson	382
Lloyd McAskill	321
Justin Mullins	312
Garrett Fondaule "Shepherd"	258
Meredith Eberhart	
"Nimblewill Nomad"	235
Burgess Smith	232
Zac Lawton "Hitch"	224
Marty Dominy	211
Warren Devine	205
Carol Devine	187
Nancy Ruggles	178
Jane Thompson	168
John Elwood	150
Sam Goldsberry	142
Christa Neher	135
Faith Schlabach	129
Thomas Coffelt	127
Shad Baker	124
Jeff Monroe	119
Michael Seth	97
Chad Churchman	97
Mary Huffer	92
Linda Clark O'Brien	90
Malcolm & Lynn Cameron	89
John Spies	71
Brian Hirt	71
Kathy Dickenson	54

Photo Gallery



Reindeer Lichens on Shenandoah Mountain



PATC crew lunch at Sexton Cabin site



New River



Waterfall on Mill Creek near Narrows, VA



Mary Ingles Trail along New River near Hinton, WV



Haunted Vista, seen from near Antrim, PA



Well-trimmed Mid State Trail near Antrim, PA



Sand Run Falls, along Mid State Trail



Farm land along Mid State Trail



Trout Run Valley from Big Schloss, VA/WV

Web addresses & emails:

GET website: <http://www.greateasterntail.net/>
 GET Facebook: <https://www.facebook.com/GreatEasternTrail/>
 GET Twitter: <https://twitter.com/Gethiking>

Email: GET Newsletter: Hupp_Tim@msn.com

Email GETA President Tim Hupp about Great Eastern Trail: Hupp_Tim@msn.com