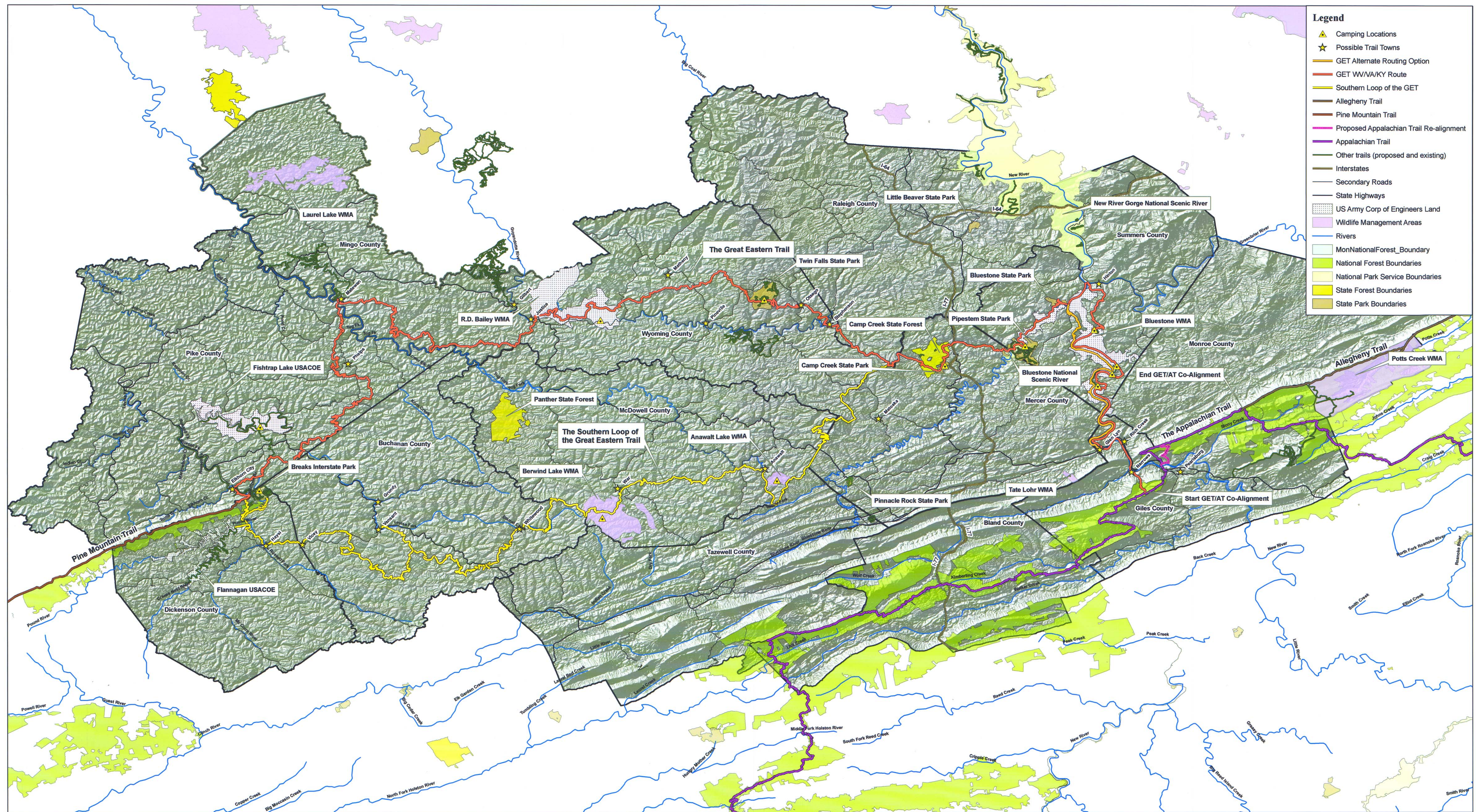


Proposed Great Eastern Trail (GET) Routing Options



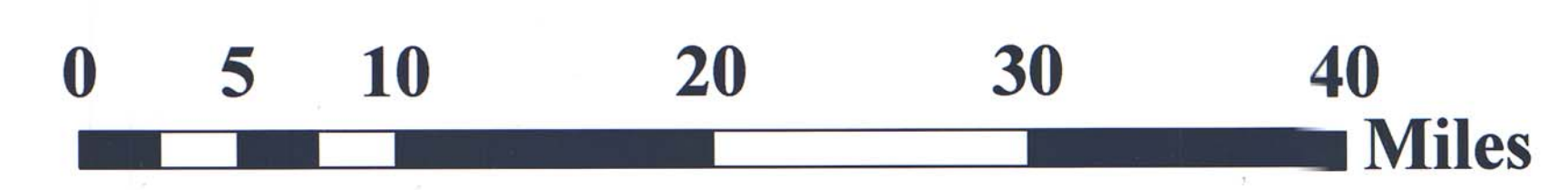
- Legend**
- ▲ Camping Locations
 - ★ Possible Trail Towns
 - GET Alternate Routing Option
 - GET WV/WA/KY Route
 - Southern Loop of the GET
 - Allegheny Trail
 - Pine Mountain Trail
 - Proposed Appalachian Trail Re-alignment
 - Appalachian Trail
 - Other trails (proposed and existing)
 - Interstates
 - Secondary Roads
 - State Highways
 - ▨ US Army Corp of Engineers Land
 - ▨ Wildlife Management Areas
 - Rivers
 - ▨ MonNationalForest_Boundary
 - ▨ National Forest Boundaries
 - ▨ National Park Service Boundaries
 - ▨ State Forest Boundaries
 - ▨ State Park Boundaries

Estimated GET mileage from Pine Mountain to AT co-alignment: 247 miles

Prepared: September 7, 2009

cd community design
ac assistance center
College of Architecture and Urban Studies
Virginia Polytechnic Institute and State University

This map represents preliminary conceptual plans for the proposed routing of the Great Eastern Trail (GET) from the Pine Mountain Trail to the Allegheny Trail. Portions of the proposed route are not open to the public. Limited sections of the proposed route on public lands are open for public use.



Funding for mapping work was provided by the USDA Forest Service Urban and Community Forest Program.